

SUMMMER CASHMERE

SS

22

SPECKLE
REVEL
VERVE
LUSH
ABUNDANCE
MURMUR
LITHE

NOVETEX

*** Speckle** 2/28NM 85% BCI COTTON 15% CASHMERE - MACHINE WASHABLE

/ Revel 2/48NM 85% BCI COTTON 15% CASHMERE - MACHINE WASHABLE

	1	2	3
A			
A	MILK */	BUTTERMILK */	SULPHUR */
	SW-80095	SY-190039	SY-130061
B			
B	TAPIOCA */	BALLERINA */	ORCHID */
	MS-130164	SR-80037	SV-180041
C			
B	ANGEL FALLS */	JUNE */	PACIFIC */
	SB-150160	SC-200112	MB-130117
D			
D	PERIWINKLE */	CHAMBRAY */	NAVY */
	SV-190038	MB-70015	SB-229
E			
C	PEARL */	UNIFORM */	BLACK */
E	MS-70004	MS-70014	SS-223

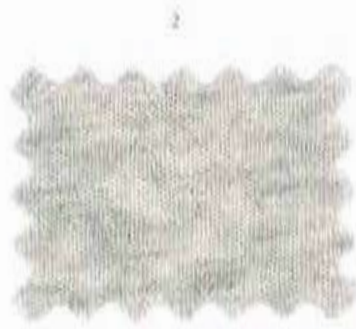
*** Speckle** - DCO

/ Revel - DCOH

● **Verve** 2/50NM 70% BCI COTTON 25% SILK 5% CASHMERE



COCONUT MW-190002



MUSHROOM MS-190003



BLOSSOM MR-190004



ELEPHANT MS-190005



WASHED MB-190006



SPACE MB-190007

● **Verve - DOSH**

◆ **Lush** 2/36NM 60% BCI COTTON 30% LINEN 10% CASHMERE



BALLET SHOES SR-160051



PALMA VIOLET MV-150003

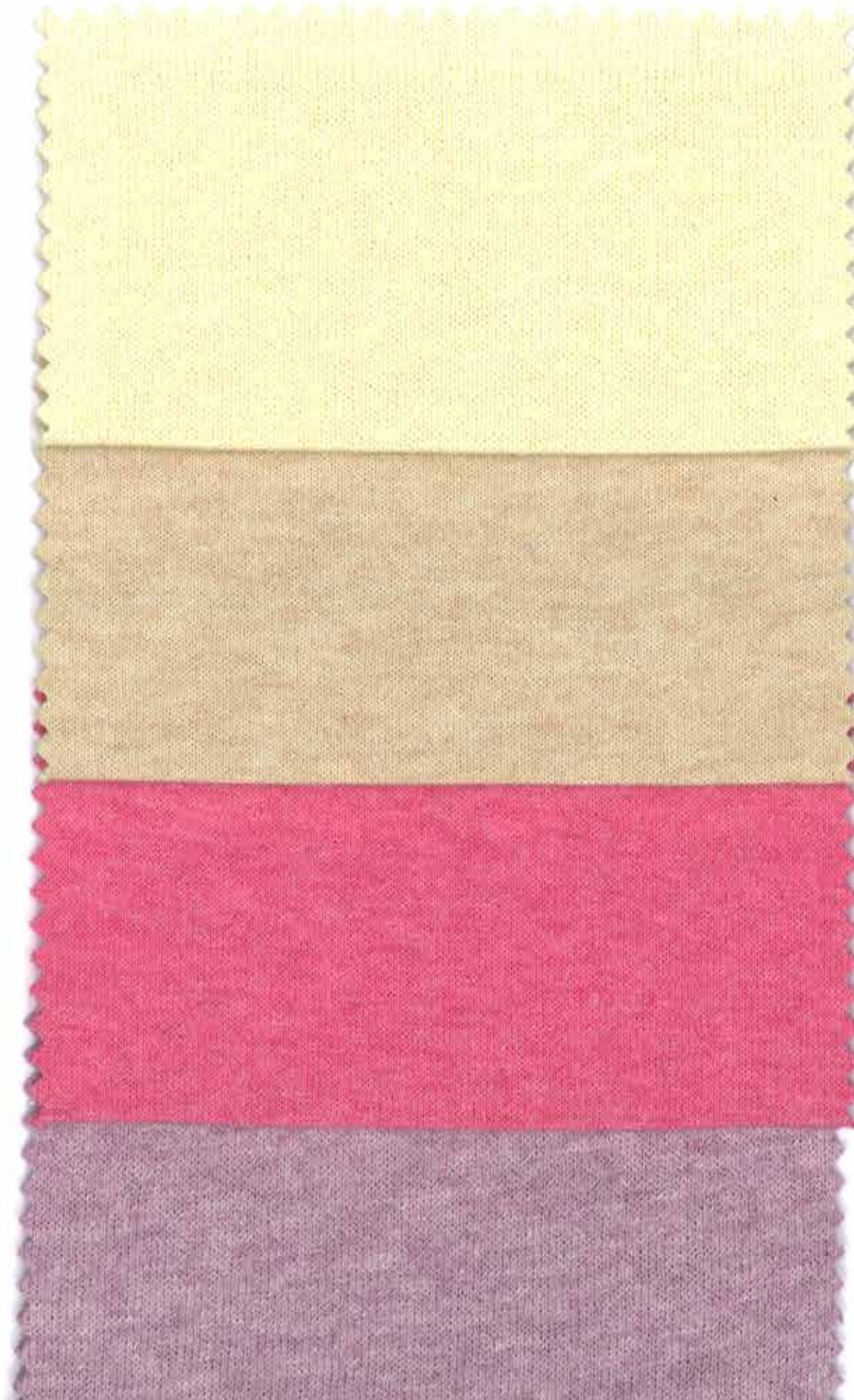


DEEP BLUE SB-150045

◆ **Lush - COLH**

Speckle 2/28nm 85% BCI COTTON 15% CASHMERE **Revel** 2/48nm 85% BCI COTTON 15% CASHMERE
Verve 2/50nm 70% BCI COTTON 25% SILK 5% CASHMERE **Lush** 2/36nm 60% BCI COTTON 30% LINEN 10% CASHMERE

FULLY STOCK SUPPORTED



SPECKLE
2/28nm
85% BCI Cotton
15% Cashmere
12GG 1END

REVEL
2/48nm
85% BCI Cotton
15% Cashmere
14GG 1END

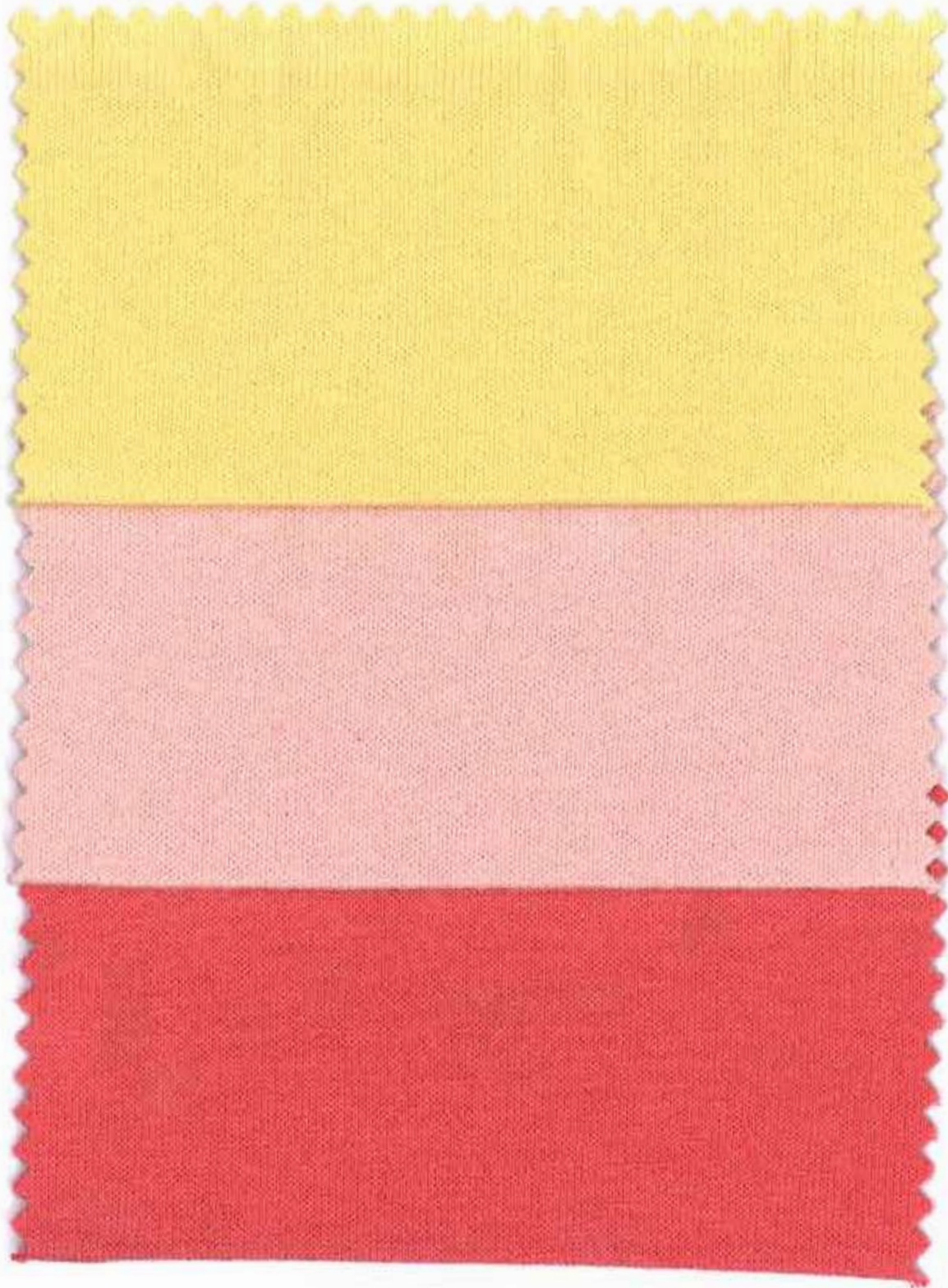
VERVE
2/50nm
70% BCI Cotton
25% Silk 5% Cashmere
14GG 1END

LUSH
2/36nm
60% BCI Cotton
30% Linen 10% Cashmere
14GG 1END

Abundance 2/30nm 92% BCI COTTON 8% CASHMERE **Murmur** 2/32nm 95% BCI COTTON 5% CASHMERE

Lithe 2/48nm 85% SILK 15% CASHMERE

FULLY STOCK SUPPORTED



ABUNDANCE
2/30nm
92% BCI Cotton
8% Cashmere
12GG 1END

MURMUR
2/32nm
95% BCI Cotton
5% Cashmere
12GG 1END

LITHE
2/48nm
85% Silk
15% Cashmere
14GG 1END

● **Abundance** 2/30NM 92% BCI COTTON 8% CASHMERE - MACHINE WASHABLE

▲ **Murmur** 2/32NM 95% BCI COTTON 5% CASHMERE - MACHINE WASHABLE



● **Abundance** 2/30NM 92% BCI COTTON 8% CASHMERE - MACHINE WASHABLE

▲ **Murmur** 2/32NM 95% BCI COTTON 5% CASHMERE - MACHINE WASHABLE



● Abundance - DXH

▲ Murmur - CBH

◆ Lithe 2/48NM 85% SILK 15% CASHMERE



summer cashmere

* Speckle

DCO-SS	223	BLACK	E3
DCO-SB	229	NAVY	D3
DCO-MS	70004	PEARL	E1
DCO-MS	70014	UNIFORM	E2
DCO-MB	70015	CHAMBRAY	D2
DCO-SR	80037	BALLERINA	B2
DCO-SW	80095	MILK	A1
DCO-SY	130061	SULPHUR	A3
DCO-MB	130117	PACIFIC	C3
DCO-MS	130164	TAPIOCA	B1
DCO-SB	150160	ANGEL FALLS	C1
DCO-SV	180041	ORCHID	B3
DCO-SV	190038	PERIWINKLE	D1
DCO-SY	190039	BUTTERMILK	A2
DCO-SG	200112	JUNE	C2

✓ Revel

DCOH-SS	223	BLACK	E3
DCOH-SB	229	NAVY	D3
DCOH-MS	70004	PEARL	E1
DCOH-MS	70014	UNIFORM	E2
DCOH-MB	70015	CHAMBRAY	D2
DCOH-SR	80037	BALLERINA	B2
DCOH-SW	80095	MILK	A1
DCOH-SY	130061	SULPHUR	A3
DCOH-MB	130117	PACIFIC	C3
DCOH-MS	130164	TAPIOCA	B1
DCOH-SB	150160	ANGEL FALLS	C1
DCOH-SV	180041	ORCHID	B3
DCOH-SV	190038	PERIWINKLE	D1
DCOH-SY	190039	BUTTERMILK	A2
DCOH-SG	200112	JUNE	C2

● Verve

DOSH-MW	190002	COCONUT	A1
DOSH-MS	190003	MUSHROOM	A2
DOSH-MR	190004	BLOSSOM	A3
DOSH-MS	190005	ELEPHANT	B1
DOSH-MB	190006	WASHED	B2
DOSH-MB	190007	SPACE	B3

◆ Lush

COLH-MV	150003	PALMA VIOLET	A2
COLH-SB	150045	DEEP BLUE	A3
COLH-SR	160051	BALLET SHOES	A1

● Abundance

DXH-SS	223	BLACK	E6
DXH-SB	229	NAVY	E5
DXH-MO	40047	GET READY	D3
DXH-MS	50026	COIN	C6
DXH-MN	70003	SABLE	C1
DXH-MS	70004	PEARL	B6
DXH-MS	70014	UNIFORM	D6
DXH-MB	70015	CHAMBRAY	D5
DXH-MN	70017	TOAST	E1
DXH-SW	70029	CREAM	A2
DXH-SR	80037	BALLERINA	A3
DXH-SW	80095	MILK	A5
DXH-SY	130086	PEAR DROP	B2
DXH-SB	150160	ANGEL FALLS	C5
DXH-SR	150178	FIRE	E3
DXH-SV	150179	LAVENDULA	C4
DXH-MN	170062	NOUGAT	D1
DXH-SB	180101	SPEARMINT	B5
DXH-MV	180122	PRINCE	D4
DXH-MN	180133	CHROMIUM	A1
DXH-SW	180134	LIMESTONE	B1
DXH-SR	180135	TAFFY	B3
DXH-SB	180136	CRYSTALLINE	A4
DXH-MS	180137	MOON LIGHT	A6
DXH-SB	190014	AIR FORCE	B4
DXH-SO	190079	PAPAYA	C3
DXH-SG	190080	CATNIP	C2
DXH-SV	200101	HELIOTROPE	E4
DXH-SG	200109	LIME	D2
DXH-SG	200110	BERYL	E2

▲ Murmur

CBH-SS	223	BLACK	E6
CBH-SB	229	NAVY	E5
CBH-MO	40047	GET READY	D3
CBH-MS	50026	COIN	C6
CBH-MN	70003	SABLE	C1
CBH-MS	70004	PEARL	B6
CBH-MS	70014	UNIFORM	D6
CBH-MB	70015	CHAMBRAY	D5
CBH-MN	70017	TOAST	E1
CBH-SW	70029	CREAM	A2
CBH-SR	80037	BALLERINA	A3
CBH-SW	80095	MILK	A5
CBH-SY	130086	PEAR DROP	B2
CBH-SR	150178	FIRE	E3
CBH-SV	150179	LAVENDULA	C4
CBH-SB	180101	SPEARMINT	B5
CBH-MV	180122	PRINCE	D4
CBH-MN	180133	CHROMIUM	A1
CBH-SW	180134	LIMESTONE	B1
CBH-SR	180135	TAFFY	B3
CBH-SB	180136	CRYSTALLINE	A4
CBH-MS	180137	MOON LIGHT	A6
CBH-SB	190014	AIR FORCE	B4
CBH-SG	200110	BERYL	E2

◆ Lithe

SIDH-SR	190095	AMARANTH	A1
SIDH-SR	190096	BRICK	B1
SIDH-SR	190097	SCARLET	C1
SIDH-SN	190100	FLAXEN	C2
SIDH-MN	190101	OLIVE	B2
SIDH-SG	190102	ARMY	D2
SIDH-SW	190103	CREAM	A2
SIDH-SB	190104	CORNFLOWER	C3
SIDH-SB	190105	ENERGY BLUE	D3
SIDH-SB	190106	NAVY	E3
SIDH-MS	190107	PIPE	A3
SIDH-MS	190108	FOSSIL	B3
SIDH-MS	190109	SHADOW	E2
SIDH-SS	190110	BLACK	E1
SIDH-SV	200114	SANGRIA	D1

summer cashmere

Speckle
Revel
Verve
Lush
Abundance
Murmur
Lithe

SS 22

Committed to Sustainability

All Spring Summer Machine Washable qualities are approved by AATCC.

All qualities with pre-consumer or post-consumer recycled fibers are subjected to limited supply. Colours may vary from colour cards swatches and different dye lots.

Each season our colours may vary, to guarantee your expectations, please advise our latest shade card.

Please contact us if you have any queries: ntx@novetex.com

NOVETEX



SUMMER CASHMERE

SS/22

Speckle

2/28nm
85% BCI Cotton
15% Cashmere
Machine Washable
Available in 15 colours

Revel

2/48nm
85% BCI Cotton
15% Cashmere
Machine Washable
Available in 15 colours

Lush

2/36nm
60% BCI Cotton
30% Linen
10% Cashmere
Available in 3 colours

Verve

2/50nm
70% BCI Cotton
25% Silk
5% Cashmere
Available in 6 colours

Abundance

2/30nm
92% BCI Cotton
8% Cashmere
Machine Washable
Available in 15 colours

Murmur

2/32nm
95% BCI Cotton
5% Cashmere
Machine Washable
Available in 24 colours

Lithe

2/48nm
85% Silk
15% Cashmere
Available in 15 colours

id.Novetex Textiles Limited

3/F Novel Industrial Building,
850-870 Lai Chi Kok Road,
Cheung Sha Wan, Kowloon,
Hong Kong

Tel: (852) 2159 5800 **Fax:** (852) 2310 1363

Email: ntx@novetex.com